

Singapore's Workplace Safety and Health

Record-low workplace fatality and major injury rates in 2025

Singapore workplaces among the safest globally with record-low* fatal and major injury rates in 2025.

- ▶ **Fatal injury rate at record low**
0.96 per 100,000 workers (2025), down from 1.2 in 2024
- ▶ **Major injury rate at all-time low**
15.7 per 100,000 workers (2025), down from 15.9 in 2024, excluding platform workers.

Sectoral Fatal and Major Injury Performance (per 100,000 workers)

CONSTRUCTION



2025: 26.3
2024: 31.0



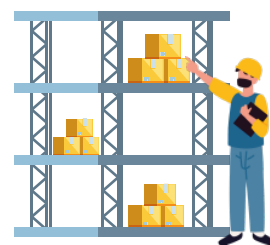
MANUFACTURING



2025: 28.8
2024: 29.3



TRANSPORTATION & STORAGE



2025: 23.8
2024: 18.4



Singapore is also one of the first countries to publish workplace safety data for platform workers (PWs)

MOM has established a Platform Worker Safety Workgroup involving comprising representatives from relevant government agencies, platform operators, NTUC and platform work associations

- ▶ Majority of PWs' injuries were sustained while they were operating vehicles or active mobility devices, with PWs on two-wheeled vehicles such as motorbikes and bicycles being more prone to injuries.
- ▶ The high injury rate among PWs reflects the risks involved in platform work and underscores Singapore's decision to enact the PW Act.

We will strengthen protections for PWs in these areas:

- ▶ improving detection of dangerous driving or riding behaviours,
- ▶ recognising and rewarding safe behaviours when performing platform work,
- ▶ raising awareness of safe practices and road safety concerns

*Comparisons exclude 2020, when COVID-19 disrupted work activities.